

# MONTHLY MEMBERSHIP PROGRESS REPORT

District 3234H1

Results as of: 12/31/2025

GMT:

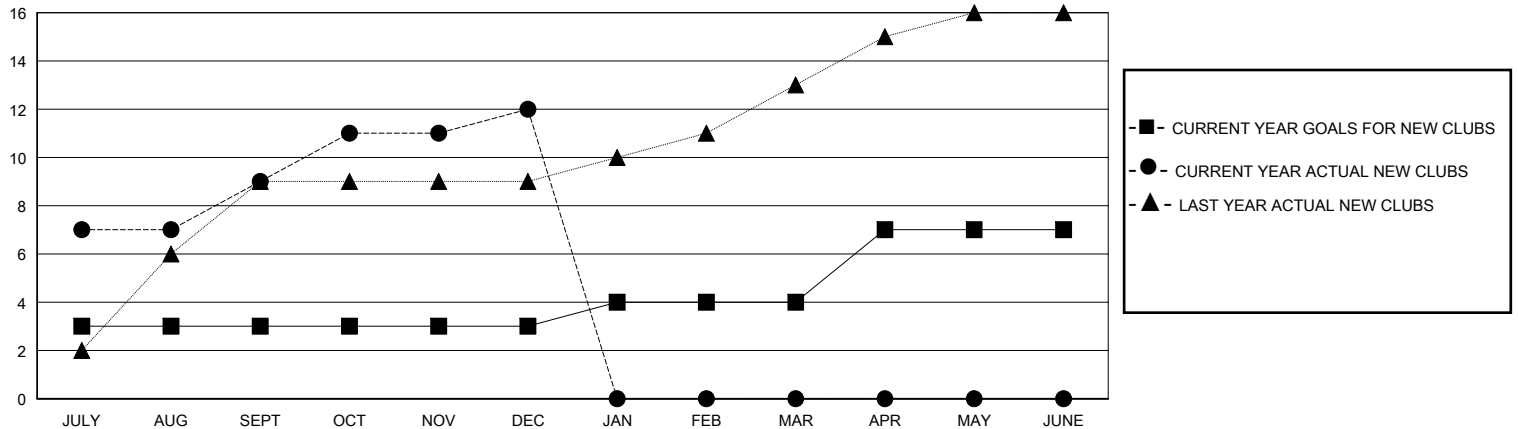
LOCATION INDIA

GMT CA

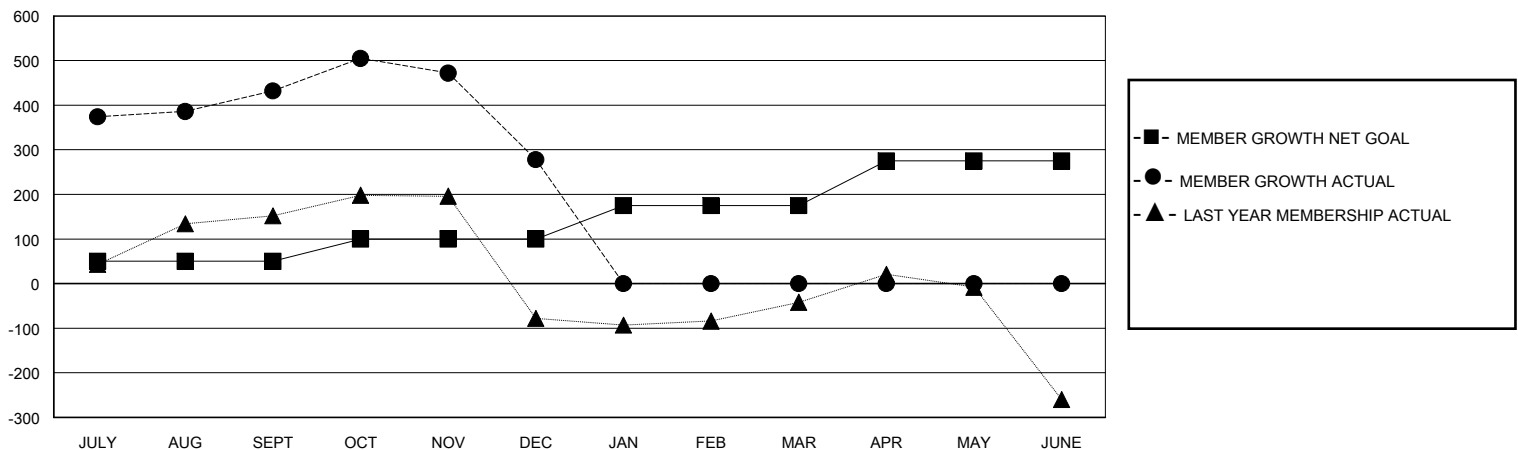
Clubs			
RESULTS FOR 2025-2026			
QUARTER	NEW CLUB GOAL	NEW CLUBS	DROPPED CLUBS
JULY/AUG/SEPT	3	9	4
OCT/NOV/DEC	0	3	3
JAN/FEB/MAR	1	0	0
APR/MAY/JUNE	3	0	0

Members			
RESULTS FOR 2025-2026			
QUARTER	MEMBER GROWTH NET GOAL	MEMBER GROWTH ACTUAL	DROPPED MEMBERS ACTUAL (including transfers)
JULY/AUG/SEPT	50	570	81
OCT/NOV/DEC	50	255	345
JAN/FEB/MAR	75	0	0
APR/MAY/JUNE	100	0	0

GOALS AND ACTUAL NEW CLUBS CUMULATIVE



GOALS AND ACTUAL MEMBERS CUMULATIVE



DROPPED CLUBS: 7

## DROPPED MEMBERS

DECEASED	2
CLUB CANCELLED	213
OTHER	211
<b>TOTAL</b>	<b>426</b>

93 CLUBS OF 124 ADDED 1 OR MORE NEW MEMBERS

[CLICK HERE FOR CUMULATIVE MEMBERSHIP DATA](#)

## GENDER DISTRIBUTION

MALE	2,376 (61.46%)
FEMALE	1,490 (38.54%)

TOTAL FAMILY UNIT MEMBERS	2,182
FAMILY MEMBERS PAYING HALF DUES	1,159